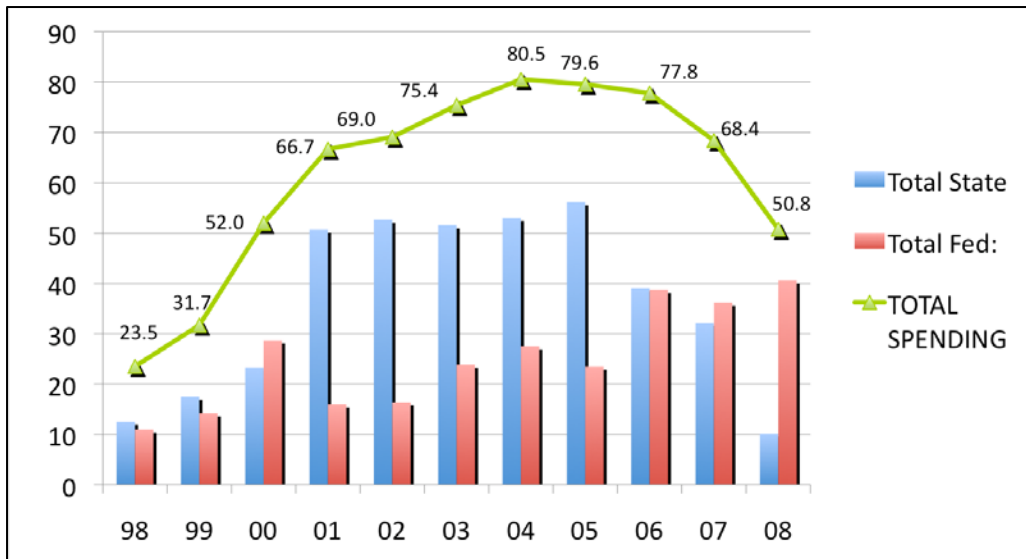


State Spending & Caseload Trends for Work Support Programs

Child Care Assistance Program: Rhode Island state spending for child care assistance has dropped by 80% since 2001 – from \$50.7 million in 2001 to \$10.2 million in 2008.

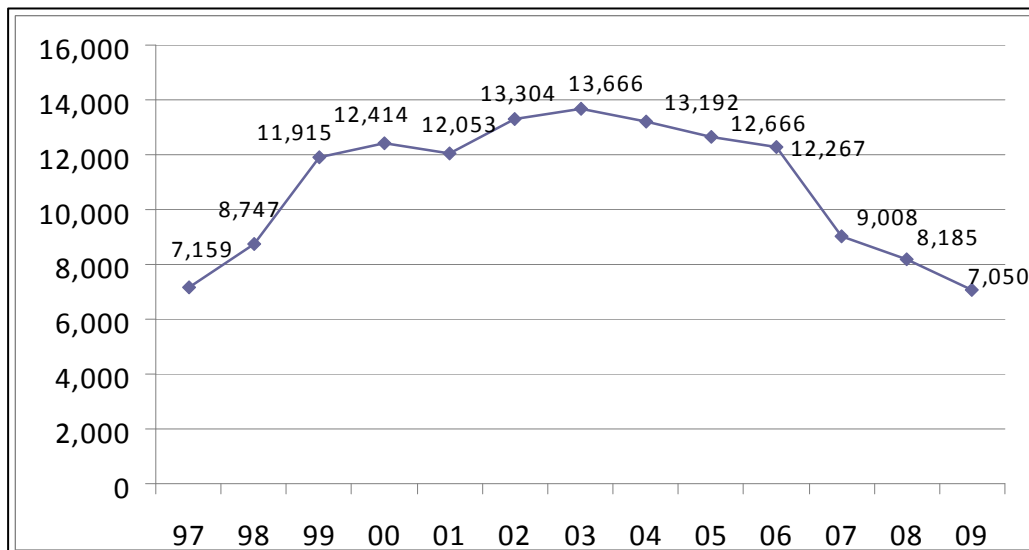
Child Care Spending SFY 1998 – 2008

(in million dollars)



The child care caseload has declined rapidly since 2006. For 2009, the number of children receiving subsidies (7,050) falls below the number of children receiving subsidies (7,159) in 1997 when the Starting Rlte Program was implemented.¹

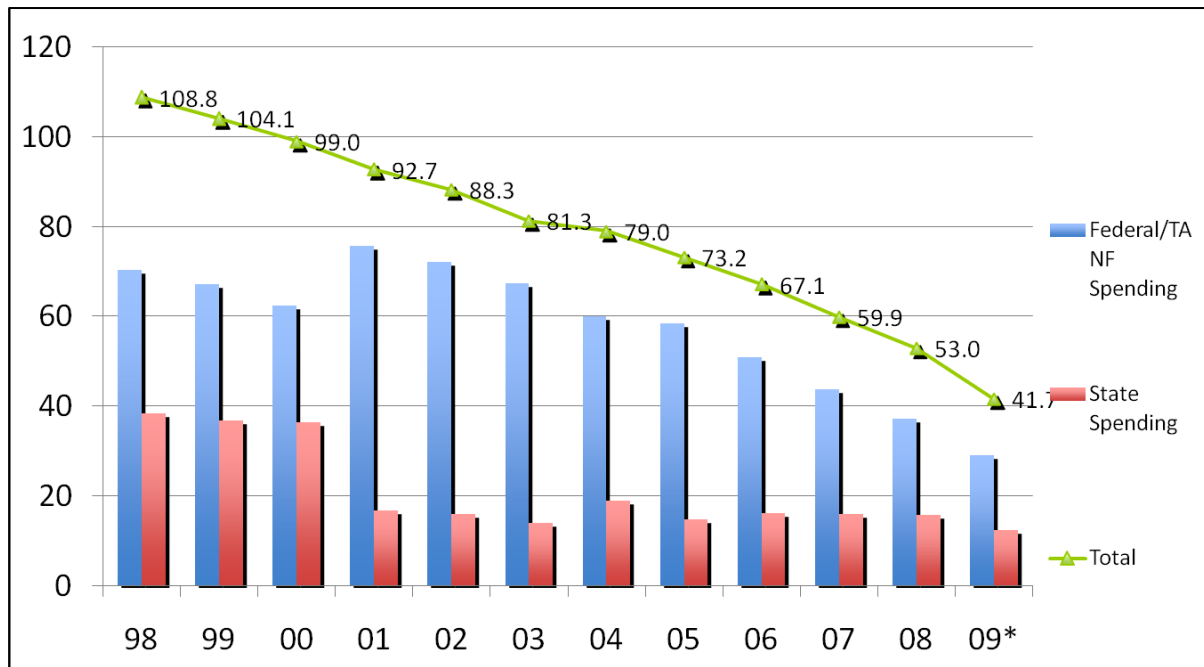
Child Care Caseloads SYF 1997 – 2009



¹ Yearly data reflects cases on December 1 of each year, except for 2008 & 2009. 2008 data reflects FY2008 data from Nov. caseload estimating conference. 2009 data reflects projected caseloads for FY2009 from caseload conference.

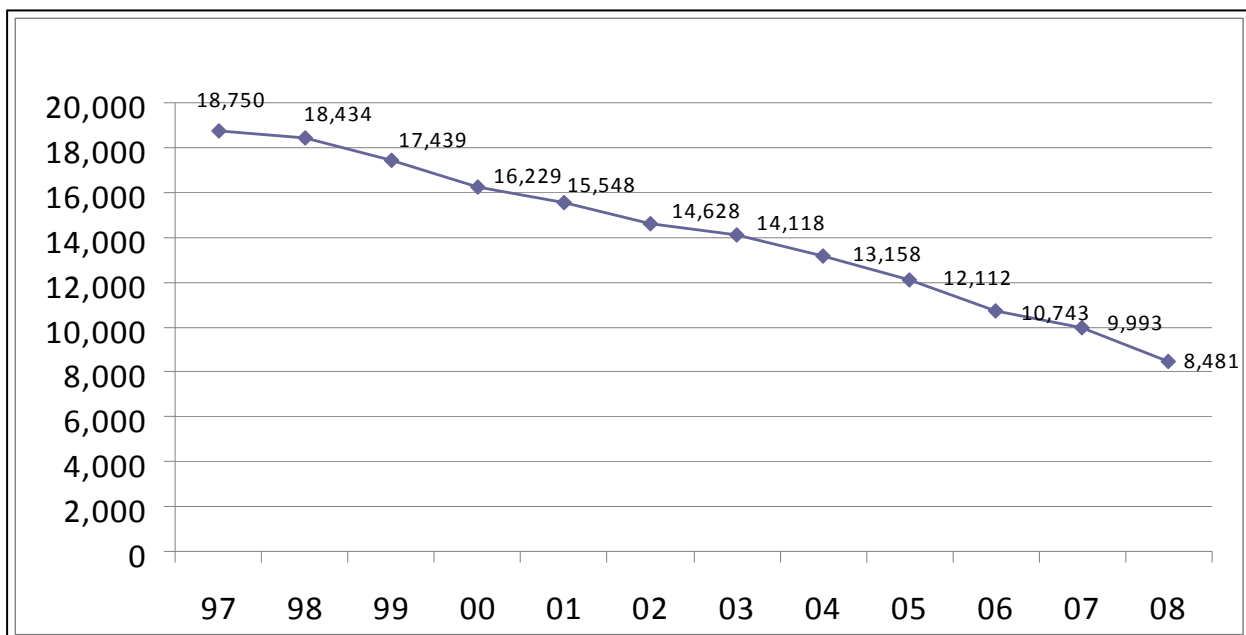
Cash Assistance Program (FIP or RI Works): State spending on cash assistance has dropped by 59% over past 10 years: \$38.4 million in 1998 to \$15.8 million in 2008

Cash Assistance Spending SFY1998 – 2009



Since the beginning of FIP, caseloads dropped by 55% - 18,750 cases in 1997 to 8,481 in 2008. Under RI Works, 1,091 “child only” cases closed on October 1, 2008.²

Cash Assistance Caseload Totals 1997 – 2008



²Yearly data reflects cases on December 1 of each year.